



# CT Scan

## Patient Information



### What is a CT Scan:

A computed tomography scan (CT scan) uses a special x-ray machine to take many pictures from different angles around the body. This means radiologists can look at small parts of the body, one slice at a time. A computer and the turning x-ray machine are used to take pictures of body tissues and organs.

### Why a CT Scan is Done:

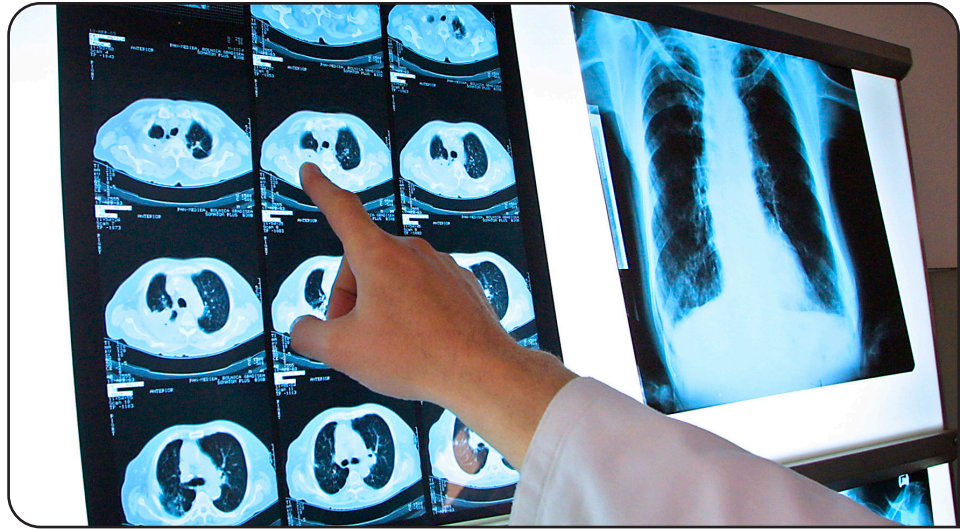
CT imaging is very useful because it can show many types of tissue, which makes it easier to find many problems such as:

- Cancers
- Cardiovascular disease
- Infection
- Trauma
- Muscle or bone disorders

### Getting Ready for the Exam:

You should wear comfortable, loose-fitting clothes for your CT scan. Don't wear clothes with snaps or zippers. Some exams need you to drink contrast 1-2 hours before your exam. If your exam uses contrast, your health care provider may ask you not to eat for four hours before your exam.

If you are having an abdominal (stomach) or pelvis exam, please plan for at least two hours for your appointment.



Most other exams will be done in 15 - 30 minutes. Tell your health care provider and technologist (the person doing your exam) if you:

- Have a history of kidney problems.
- Have an allergy, or history of an allergy to the contrast.
- Have diabetes and are on medicines.
- If there is a chance you may be pregnant.

### **What You Can Expect During the Exam:**

For most CT scans, you will have the exam and then go home. The CT scanner looks like a big donut with a thin table in the middle. Once the exam starts, the table will move slowly into a round opening of the CT scanner while the x-ray tube turns around your body. You will be alone in the room during the scan, but the technologist can see, hear and speak with you at all times.

### **Risks:**

Radiation is used with a CT scan, but the benefit of a diagnosis (knowing what is wrong) outweighs the risk of the radiation.

### **Report:**

Results from the exam will not be ready right away. A radiologist will look at your pictures and report back to your health care provider in 24 to 48 hours, Monday through Friday. Your health care provider will give you the results.

### **Directions:**

Waverly Health Center is at 312 Ninth Street, SW in Waverly. Please go through the green entrance and check in at the registration desk. When you have finished your check in, you will be taken to the radiology waiting area.