

Waverly Health Center Volunteer Services

NEWSLETTER

APRIL 2026

NOTES FROM MELINDA

I am really looking forward to April since I am going to see Megan, my daughter, in Bend, OR April 7 - 14 and the longer days with more sunshine and warmer weather.



WHC is adding breast care services with Dr. Jayson Gesme. What a win for WHC. His clinic is located at the Green entrance - turn right - doors 5 and 6 (see picture)



Yes, General Surgery Clinic was there and now they will be sharing space with the Walk-In-Clinic.

I just love how WHC is able to bring needed services quickly to our hospital!



Melinda



Walk-In Clinic
HOURS

Monday - Sunday:
8 a.m. to 8 p.m.

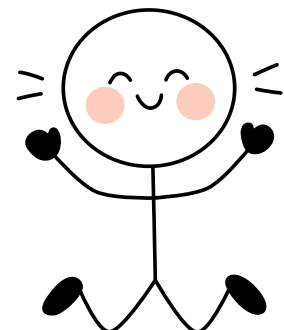
Holidays:
8 a.m. to 4:30 p.m.

General Surgery Clinic

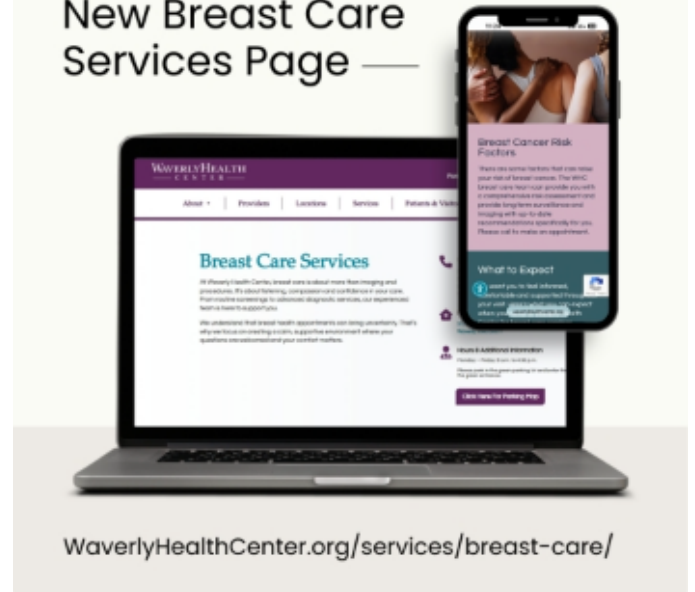
WAVERLYHEALTH
CENTER

New Volunteers:
 Cameron Noreen
 Micki Denner
 Cassidy Jones
 Kaya Hines
 Rentse De Jong
 Amaya Weber
 Austin Souhrada

Glenda Kleitsch
 Rylee Hillman
 Hope Chiattelo
 Carol Herman
 Sydney Bochmann
 Hadley Boshart
 Connor Smith



New Breast Care Services Page —



WaverlyHealthCenter.org/services/breast-care/

Check Out Our new Breast Care Services Page

We've launched a new breast care services page on WHC's website to better showcase the services we offer!

This page highlights everything from routine screenings to advanced imaging, including our breast MRI capabilities and helps guide patients on what to expect and how to schedule.

Many patients may not realize the full range of breast care services available so this is a great resource to share when questions come up.

WaverlyHealthCenter.org/services/breast-care/

Waverly Health Center Volunteer Services

TRAINING CORNER

Sever Weather

Lightning can strike up to 10 miles from a storm.



Did you know lightning is one of the top storm-related killers in the U.S.?

Here's how to stay safe:

- When thunder roars, go indoors
- Wait 30 minutes after the last thunder before going back outside
- Avoid open fields, tall trees and metal objects
- If you're on the water, get to shore immediately

Be Prepared!

Severe weather can develop fast. The best time to prepare is before storms arrive.

Take a moment today to:

- Review your family's shelter plan
- Check your emergency kit
- Enable weather alerts on your phone
- Know where to go if a warning is issued

Storms can be scary, but preparation helps everyone stay calm.

- Walk through your shelter plan together
- Keep flashlights and comfort items handy
- Practice what to do during a warning

Prepared communities are safer communities. Empower your family with knowledge and confidence.



Strong winds and hail can be just as dangerous as tornadoes.

If a Severe Thunderstorm Warning is issued:

- Move indoors immediately
- Stay away from windows
- Secure outdoor items that could become projectiles
- Park vehicles in a garage or under shelter if possible

Stay alert and stay safe as storms move through.

Hail and straight-line winds can cause major damage in minutes.

Here's how to prepare:

- Bring patio furniture, grills and trash bins inside
- Close blinds and curtains to reduce injury from broken glass
- Avoid driving during hail—pull over safely and angle your car away from the storm



Waverly Health Center Volunteer Services

March Auxiliary Board Meeting

Highlights from the WHC Auxiliary March meeting 3/9/26. There will NOT be a meeting in April.

- CEO Jodi Geerts shared that Dr. Jayson Gesme will soon start employment at WHC, with Stacy Vrzak, a nurse practitioner, joining him. He is a breast specialist whose focus areas are people who have cancer (both women and men), people who are at high-risk who may be helped with prophylactic medications and women who have general women's needs. She also reported that many employees have been putting in a lot of time to get EPIC implemented and gave kudos to the whole WHC organization. They plan to go live on Oct. 3. WHC received a grant for equipment from the state, although the exact amount received is unknown at this time. The hope is to have a DaVinci robot operational by the end of September. Current general surgeons Dr. Garrett and Dr. Henry are excited to have it available for patients in Waverly.
- Auxiliary finances show a balance of \$11,962.29.
- The Emerson's sale of scrubs, clothing and shoes will be in Tendrils March 31 and April 1. In May there will be a Gift Garden fundraiser of selling vegetable seedlings. The Nutman will be here May 12-13. Be sure to save the date of June 3 for Designer Bag BINGO!
- The deadline for health education scholarship applications is April 10.
- The Auxiliary 65th Anniversary Celebration is underway with a large banner displayed outside the gift garden, registration in the Gift Garden for door prizes to be won at the end of March and the give-away of Post It notes.
- Information for Volunteer of the Year has been sent out. Nominations are due May 1.
- The Staff Appreciation Event will be March 25. Treats will be served by volunteers on-site and delivered to staff at the off-site clinics. Thank you to everyone that donated. 14 WHC staff will be awarded prizes worth \$290. Staff will enjoy an ice cream bar, fruit and flavored water.
- **The Auxiliary Annual Meeting:**
 - **May 28, 2026**
 - **9:30 - 10:00 social time**
 - **10:00 - 11:00 business meeting**
 - **Installation of new officers**
 - **Scholarship winners recognized**

WAVERLYHEALTH
CENTER
AUXILIARY
caring ★ sharing ★ helping



Scrubs, Clothing & Shoe Sale

Tuesday, March 31

8:00 a.m. to 4:00 p.m.

Wednesday, April 1

7:30 a.m. to 1 p.m.

Open
to the
public!



Tendrils Rooftop Garden



- Shoes
- Non-scrub clothing
- Sizes XS-5X scrubs and S-3X clothing available
- And more!

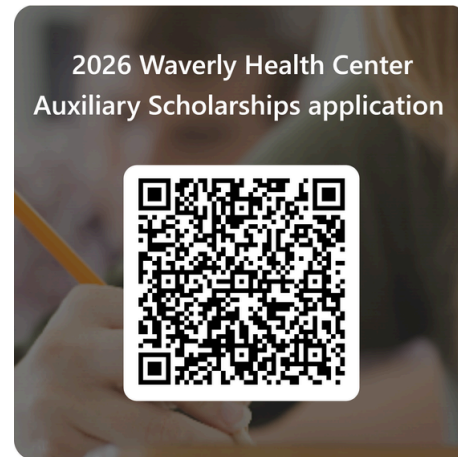
Don't see what you're looking for? Just ask!

Proceeds support Auxiliary projects that help WHC and provide scholarships for students entering health service occupations.

WAVERLYHEALTH
CENTER
AUXILIARY

Brought to you by:
Emerson's at the Willow
1631 4th St SW Ste 105
Willowbrook Mall
Mason City, IA 50401
(641) 424-7060

Waverly Health Center Volunteer Services



WHC Auxiliary is now accepting applications for its annual scholarships for students pursuing health-related careers. Applicants must be from WHC service area who have completed or are completing at least one year of higher education. Scholarship awards start at \$1,000.

Scholarships are funded through WHC Auxiliary projects such as the Gift Garden, fundraisers (Scrubs, Nutman, and Blooming Bag BINGO) and membership dues.

If you would like to support our scholarship fund, donations are accepted at any time. Donations can be mailed to WHC Auxiliary, 312 Ninth Street SW, Waverly, IA 50677.

Completed applications are due April 10, 2026.

Apply at waverlyhealthcenter.org/about/auxiliary or above QR code.

Volunteer of the Year

We are now accepting nominations for the 2026 Volunteer of the Year!

Nominations will be accepted through May 1.

The Selection Committee will review all submissions and present a recommended nominee to the WHC Auxiliary Board for final approval on May 11.

Nominees should meet the following criteria:

- Have at least one year of current, active volunteer service with WHC
- Demonstrate an outstanding commitment to service, which may include:
 - A willingness to go above and beyond in their duties and responsibilities
 - Compassion and caring interactions with patients, staff and visitors

Please submit nominations if you feel a volunteer exemplifies these qualities and deserves recognition. Let Melinda know if you need a paper form.

We can't wait to hear your stories of exceptional service and dedication!

Nominate a volunteer here: <https://forms.office.com/r/bbH4d5fdPJ>

DATES TO REMEMBER:



2026



4/1 Auxiliary Fundraiser/Scrubs/Shoes/Clothing in Tendrils 7:30 - 1:00 pm

4/3 LifeServ Community Blood Drive

4/3 Amaya Weber

4/3 No volunteering on Good Friday

4/5 Easter



4/8 - 4/14 Melinda is out of the office

4/7 Sam Rew

4/9 Rice Day at Wartburg

4/13 Ann Henninger Trax

4/13 Barb Dahlby

4/14 Breast Cancer Support Group 6:30 - 7:30 pm in Tendrils

4/16 Parkinson's Support Group 1:30 - 3:00 pm in CG Room

4/18 Joyce Garner

4/18 Mike Berstler

4/23 Welcome to Medicare 6:00 - 8:00 pm in Tendrils

4/25 Jean Lanske

4/26 Phyllis Fuller

***** No Auxiliary Board meeting in April

Waverly Health Center Volunteer Services