

Waverly Health Center Volunteer Services

NEWSLETTER

JUNE 2026

NOTE FROM Melinda

I'm excited to share that my daughter, Megan is getting married! I'll be out of the office June 16–June 24 to celebrate with her and our family.

I recently attended a dementia webinar and picked up some really helpful information. If you are interested in learning more or would like additional information, please don't hesitate to reach out.

With the warm weather finally here, I'm looking forward to getting outside more and enjoying some time on the golf course. I hope you have something to look forward to this summer too!

Melinda

BLANKETS NEEDED

WHC is very excited to have breast care services available with Dr. Gesme and Staci Vrzak. With the addition of this service, we would like to offer their patients a soft fleece blanket to help keep warm during chemo treatments or other doctor visits.

Breast Care Blanket Needs:

- Size: 4' x 4'
- Material: Fleece
- Approximate need: 5 blankets per month

We are also seeking handmade blankets to support some of our most vulnerable patients, including newborn babies, young children undergoing surgery, long-term adult patients and visitors to our emergency department.

Donated blankets provide comfort, warmth, and a sense of care during difficult and often stressful times. Your contribution truly makes a difference.

General Blanket Guidelines:

- Sizes: 2' x 2'
- 3' x 3'
- 4' x 4'
- Materials: Soft baby yarn (crocheted or knitted)
- Single-layer fleece
- Soft fabric blankets

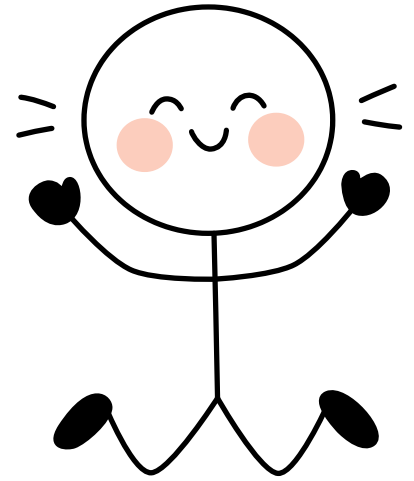
All blankets should be new and clean.

Thank you for helping us wrap our patients in warmth, compassion and kindness.

Waverly Health Center Volunteer Services



New Volunteers:
Julie Funk
Nile Funk
Kyndra Cummings



Volunteers are still needed in our Gift Garden and new opportunities are coming soon for the dining room. Please refer a friend.

TRAINING CORNER

Since phishing is the most common form of social engineering, let's take a closer look at seven areas in an email and their corresponding red flags.

FROM

- An email coming from an unknown address.
- You know the sender (or the organization), but the email is unexpected or out of character.

TO

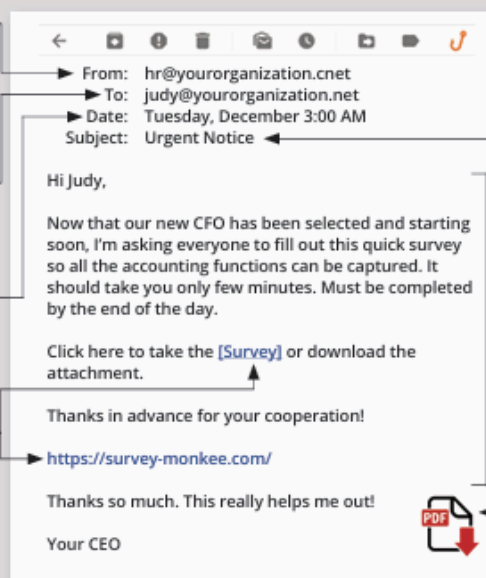
- You were copied on an email and you don't know the other people it was sent to.

DATE

- You receive an email that you would usually get during normal business hours, but it was sent at 3:00 a.m.

HYPERLINKS

- There are misspellings in the link.
- The email contains hyperlinks asking you to take an action.
- When you hover your cursor over the link, the link address is for a different website.



SUBJECT

- The subject line of an email is irrelevant or doesn't match the message content.
- It's an email about something you never requested or a receipt for something you never purchased.

CONTENT

- The sender is asking you to click on a link or open an attachment.
- The email is asking you to look at a compromising or embarrassing picture of yourself or someone you know.
- You have an uncomfortable feeling, or it just seems odd or illogical.

ATTACHMENTS

- Any attachment you receive that you aren't expecting.

Waverly Health Center Volunteer Services

AUXILIARY MEETING

Highlights from the WHC Auxiliary May meeting 5/11/26.

Andrew Piehl, Business Development & Fund Specialist, introduced himself and shared the plan to feature spotlights on each Foundation Board member. The Auxiliary president is a member of the Foundation, which meets quarterly.

As of 3/31/26 the Auxiliary Endowment is \$4,942.67. The decrease from last year is due to our \$10,000 donation to the Foundation for the breast coil fundraiser.

Auxiliary finances show a balance of \$11,605.44 at the end of April. Fundraisers not included in that balance were \$1,078.42 from Emerson's Sale and \$112 from the pop-up plant sale. The Nutman is scheduled for May 12-13 and Blooming Bags Bingo is set for June 3 at WAVP.

Carol Bruxvoort resigned as Fundraising Chair. People interested in that position should contact Melinda.

After many years Beth Giesmann resigned as Gift Garden Manager. Nette Schreen will take the manager position with Vicki Piehl as assistant manager. Vicki Haaland will also continue as assistant manager. Huge thank you to Beth for all of her years of dedication!

The Scholarship Committee reviewed 22 completed scholarship applications and awarded 17 scholarships for a total of \$20,000: six for \$1,500 and 11 for \$1,000. Five institutions are represented.

The Staff Appreciation event was held 3/25/26. Blue Bunny ice cream and fresh fruit were served to 150 people on site and muffins were delivered to 27 people in outer clinics.

The Volunteer Appreciation event with a movie theme of popcorn bar, dirty sodas and Waverly dollars was held 4/30/26. Thirty-eight volunteers attended and 38 staff contributed to the event. Alice Kuennen is selected as Volunteer of the Year.

WHC is rolling out new values: ACT. Accountability – Compassion – Teamwork

Hospital Week starts 5/11/26; events are funded by donations. A photo of staff and volunteers in their WHC t-shirts will be taken at the Red Entrance on 5/14 at 2:30.

WHC Auxiliary has been chosen to be in the Heritage Days Hall of Fame. More details about July events are forthcoming.

The Auxiliary Annual Meeting will be held in Tendrils on Thursday morning, May 28. Emily Schut, breast cancer navigator is the speaker. Officers will be installed, scholarship winners and volunteer of the year will be recognized and a group picture for the Hall of Fame celebration will be taken.

Thank you from Beth

Thank you so much for all your help and support during my time as manager. I couldn't have done it without your help and dedication. It has been a privilege to work with such a fantastic group of people. I wish you all the very best.

With appreciation, Beth Giesmann

Waverly Health Center Volunteer Services

Support the Auxiliary

Please consider donating to the WHC Auxiliary. This past fiscal year the Auxiliary has been able to give the following:

July 2025 - \$10,000 to WHC Foundation- NeoCoil MRI breast coil campaign

July 2025 - \$2,000 to WHC to support staff/family appreciation event/Palmer's

August 2025 – 18 scholarship recipients total of \$20,000

To give a donation, you can fill out the below information:

AUXILIARY MEMBERSHIP 2026 GIFT STATEMENT

Name(s):

Address City, State, Zip:

Email

Phone Number:

GIFT OPTIONS (all gifts are tax-deductible)

I would like to make a gift of \$ _____ (checks payable to Waverly Health Center Auxiliary)

I would like my gift to benefit: (please check your choice)

The Auxiliary Endowment Fund

The Auxiliary Health Education Scholarships

Any monies received without designation will be put towards Scholarships.

Make Checks payable to:

Waverly Health Center Auxiliary

312 Ninth St. SW, Waverly, IA 50677

Thank You

**A SMALL
DONATION
MAKES A
DIFFERENCE**

Waverly Health Center Volunteer Services

VOLUNTEER OF THE YEAR

WINNER: Alice Kuennen

Area of Service: Center Pharmacy

Nominated by: Sarah Dunleavy

Alice Kuennen is scheduled to volunteer on a weekly basis in Center Pharmacy and is a Registered Pharmacy Support Person with the Iowa Board of Pharmacy. She arrives each Tuesday morning with a smile on her face and ready to help. In fact, sometimes she comes in on extra days when we need more assistance and is willing to do so on short notice. In addition, if she has to miss her regularly scheduled day, she comes in on another day to assist. Alice helps by receiving and checking in the orders from our wholesalers and placing them on the shelves. This is not as easy a task as it sounds, for there are special storage considerations for some medications, some medications are shelved "sort alphabetically" and according to class or type (injections, liquids, creams, etc.)

She assists us three times yearly with inventory tasks, which is a tedious project in a pharmacy! Alice makes numerous trips through the halls of WHC to take our daily deposit, pick up items from inpatient pharmacy and take our outgoing mail to the mailroom. On a busy day, she will even grab us lunch from the cafeteria if we can't get away to do so ourselves. Although she maintains "that she doesn't dust at home," Alice keeps our shelves tidy by dusting the shelves, the medication bottles and checks our inventory for outdates, which is especially important in a pharmacy.

Alice has also helped us return medications to our wholesalers when necessary. This required use of our software, and she willingly took on the task and learned what she needed to do. Alice is a quick learner and possesses great self-initiative. In addition, the state of Iowa has a medication depository where qualifying unopened and in-date medications can be sent and given to those in need. When we have collected such items, Alice completes the necessary paperwork and prepares them for shipment to the depository.

WHC is not the only recipient of Alice's volunteerism. She is an active volunteer within her church, St. Patrick's, as well as the Denver American Legion.

We look forward to seeing Alice each week and hope that she feels the same about us! She remembers each of us during the holiday season, sometimes with vacation souvenirs, and with delicious baked goodies throughout the year. Many of the tasks Alice completes for us are routine items for our staff. Her assistance makes it possible for us to give attention to other tasks and it simply eases the workload. Alice is truly an example of the newly introduced Waverly Health Center values of Accountability, Compassion and Teamwork.



(pictured: Sarah and Alice)

Auxiliary 2026 Scholarship Winners



- Addison Schultz
- Addy Johnson
- Addy Schut



- Alex Pries
- Anna Mulert
- Brooke O'Brien

- Emma Forest
- Grace Heying
- Hannah Buttjer



- Kalisa Weathersby
- Keatan Pfantz
- Mackenzie McDonald



- Norma Spiker
- Olivia Janss
- Sophia Stahle

Congrats!



- Stephanie Penney
- Sydney Bochmann



Blooming Bags Bingo

WEDNESDAY, JUNE 3, 2026

\$40 per person

Hosted at Waverly Area Veterans Post,
1300 4th St. NW, Waverly, IA 50677

Bring your friends for a fun night of BINGO
and a chance to win a beautiful handbag -
all while supporting a great cause!

Must be 18+ to attend.

* Event Schedule *

5:00 PM – Doors open

6:00 PM – BINGO begins

Walking Tacos available for \$5

Includes 15 BINGO games + 5 purse tickets

To purchase tickets,
scan the QR code or visit
bit.ly/WHC-BloomingBagsBingo



Questions? email MPitt@WaverlyHealthCenter.org

All proceeds go to Waverly Health Center Auxiliary



SUN	MON	TUE	WED	THU	FRI	SAT
	1	2 Pat Colsch	3 Blooming Bags Bingo WAVP 5:00 - 9:00	4	5	6
7	8 Auxiliary Board Meeting 9-10am CG Room	9 Breast Cancer Support Group 6:30-7:30pm Tendrils	10	11	12	13 Frank Haaland
14	15 Alice Kuennen	16 Speakers Series: Cyber Security 1:30-2:30pm Tendrils	17	18 Parkinson's Support Group 1:30-3pm CG Room	19 Barb Harken	20 Josef Breutzmann
Melinda out of the office June 16 - June 24						
21  	22	23	24 Carol Young	25	26	27
Melinda out of the office June 16 - June 24						
28	29	30 Caleb Cross				